

SaferSphere Today



[3] Editor's Welcome - Mike Forsyth

[4-5] Wins & Completions

[6-7] Construction deaths on the up!

[8-9] Latest News

EXPERIENCE
RANGING FROM
MINOR PROJECTS
OF £20K THROUGH
TO MAJOR
DEVELOPMENTS
TO THE VALUE
OF £500M

JOIN OUR MAILING LIST



SaferSite:SaferSphere
www.safersphere.co.uk



EXPERIENCE
RANGING FROM
MINOR PROJECTS
OF £20K THROUGH
TO MAJOR
DEVELOPMENTS
TO THE VALUE OF
£500M.

OUTSOURCED SAFETY SUPPORT AT A FRACTION OF THE COST

CONTRACTOR SAFETY SUPPORT

Safer Sphere appreciates that the CDM Regulations 2015 and Health and Safety Legislation can be a burden to small and medium sized contractors. Such organisations rarely have the resource to employ internal Health and Safety professionals, meaning the burden is applied to those managing the organisation or supervising construction activities.

Our aim in this department is to reduce that burden by providing compliant Contractor CDM Safety Support, which enables contractors to make Health and Safety a simple process and gives them ability to concentrate their efforts in providing quality and cost effective solutions in their chosen field. Whether you are a "contractor" or acting as "Principal Contractor", Safer Sphere are here to help you!

THE RANGE OF SERVICES AVAILABLE FOR CONTRACTOR CDM SAFETY SUPPORT INCLUDE:

LITE PACKAGE

- Provision of Competent Person in accordance with Regulation 7 of the Management of Health & Safety at Work Regulations 1999.
- Annual audit of client competent health & safety advisor Reg 7 certificate.

- Access to advice by phone and email.
- Monthly safety bulletin

STANDARD PACKAGE *Lite Package Plus*

- Fully compliant Safety Management System.
- Monthly site audit.
- Accident and Incident investigations.
- Annual office / premises risk assessment and fire risk assessment.

PREMIER PACKAGE *Standard Package Plus*

- 1No. additional project site audit per month.
- Development of up to 2No. bespoke risk assessments / method statements / COSHH assessments.
- Assistance in obtaining or maintainingSSIP accreditation.
- Attendance at annual management meeting to review organisational H&S.

If the packages do not suit your particular needs then Safer Sphere can develop a bespoke subscription to suit your requirements, with additional ad-hoc services available when and where you need them.

Please contact Safer Sphere for any health & safety consultancy service
fee quotations on **01744 768023** or email: **info@safersphere.co.uk**

welcome!!

THIS edition of Safer Sphere Today provides the latest Health and Safety news, topical bulletins as well as an insight into our business. Included in this issue is an article on construction health and safety with a reflection on the latest HSE statistics for 2017/2018. We share our news about the APS awards and take a look at our new project wins and completions since our last issue.

Safer Sphere also showcases our latest client case study on the Project Urban Dandara PRS scheme.

Safer Sphere operates nationally from our headquarters in the North West. If you have a need for any business or project support, please do get in contact with our team.

Kind Regards



Mike Forsyth

T 01744 768023

E info@safersphere.co.uk

W www.safersphere.co.uk

JOIN OUR MAILING LIST



Wins and Completions

Wins

STONYHURST (HILLCREST HOMES DEVELOPMENT)

CLIENT: ARTEZ AND HILLCREST HOMES

SERVICES: CDM CLIENT ADVISOR & PRINCIPAL DESIGNER ADVISOR



MAJOR SUPERMARKET CHAIN - LONDON STORE

CLIENT: EXCEL CONSTRUCTION

SERVICES: PRINCIPAL DESIGNER ADVISOR



BENTON PARK HIGH SCHOOLS

CLIENT: INTERSERVE

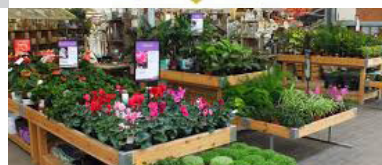
SERVICES: PRINCIPAL DESIGNER ADVISOR AND CDM CLIENT ADVISOR



WELL KNOWN GARDEN CENTRE – WARRINGTON STORE

CLIENT: LEACH RHODES WALKERS

SERVICES: PRINCIPAL DESIGNER ADVISOR



PHASE 1, BEREWOOD, WATERLOOVILLE

CLIENT: UMC ARCHITECTS

SERVICES: CDM CLIENT ADVISOR & PRINCIPAL DESIGNER ADVISOR



EDWARD PAVILLION

CLIENT: ARDMAC

SERVICES: PRINCIPAL DESIGNER ADVISOR



LIVERPOOL & KNOWSLEY SCHOOLS

CLIENT: ENGIE

SERVICES: PRINCIPAL DESIGNER ADVISOR



DAVID M ROBINSON JEWELLERS, ST ANN'S SQUARE, MANCHESTER

CLIENT: 5 PLUS ARCHITECTS

SERVICES: PRINCIPAL DESIGNER ADVISOR



FIRST STREET, MANCHESTER

CLIENT: RAYNER ROWEN

SERVICES: PRINCIPAL DESIGNER ADVISOR



PREMIER LEAGUE FOOTBALL CLUB TRAINING FACILITY

CLIENT: RAYNER ROWEN

SERVICES: PRINCIPAL DESIGNER ADVISOR

SAFETY SUPPORT SERVICES: EXCEL CONSTRUCTION



BOLTON PARISH PRIMARY SCHOOL

CLIENT: GALLIFORD TRY

SERVICES: PRINCIPAL DESIGNER ADVISOR



ROYDS HIGH SCHOOL

CLIENT: INTERSERVE

SERVICES: PRINCIPAL DESIGNER ADVISOR



FARSLEY SPRINGBANK PRIMARY SCHOOL

CLIENT: INTERSERVE

SERVICES: PRINCIPAL DESIGNER ADVISOR



WALKLEY HIGH SCHOOL

CLIENT: INTERSERVE

SERVICES: PRINCIPAL DESIGNER ADVISOR



BARRY'S GYM, MANCHESTER

CLIENT: RECOM SOLUTIONS AND BARRY'S GYM

SERVICES: PRINCIPAL DESIGNER ADVISOR & CDM CLIENT ADVISOR



Completed

ROMFORD SPECIAL CARE BABY UNIT

CLIENT: ENGIE

SERVICES: PRINCIPAL DESIGNER ADVISOR



KEELE UNIVERSITY

CLIENT: VITAL ENERGI

SERVICES: PRINCIPAL DESIGNER ADVISOR

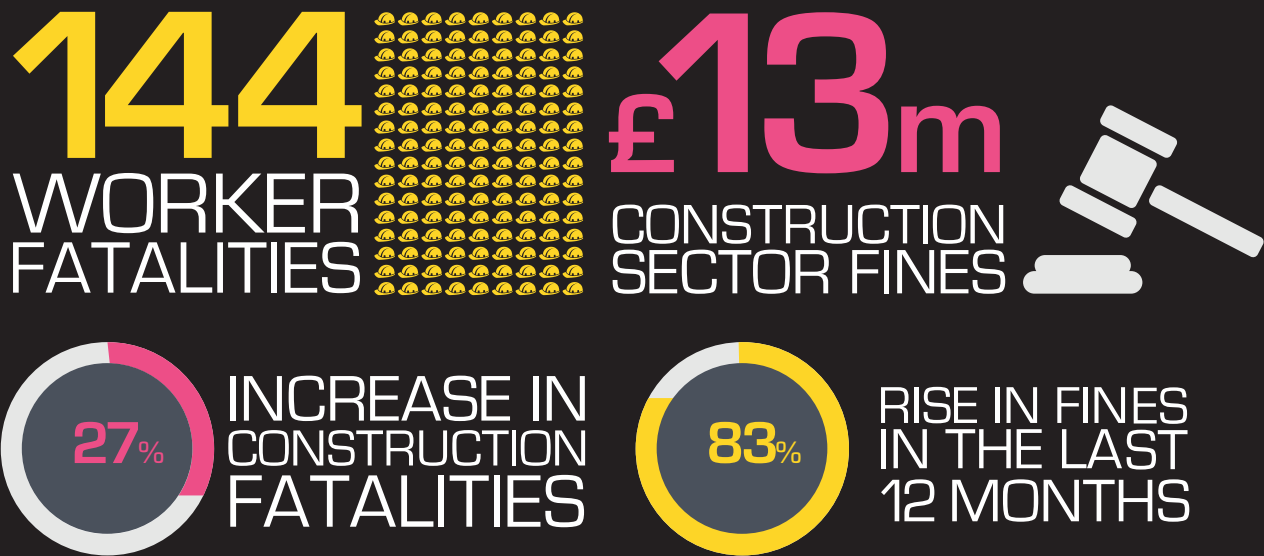


TRAFFORD GOLF COURSE

CLIENT: CUBE ARCHITECTS AND PEEL LAND AND PROPERTY

SERVICES: PRINCIPAL DESIGNER ADVISOR AND CDM CLIENT ADVISOR





CONSTRUCTION DEATHS ON THE UP!

HSE construction industry annual 2017/2018 statistics have been realised and fatal accidents in the construction rises sharply. Failing to fulfil your legal duties can result in serious consequences.

The Health and Safety Executive (HSE) has released its annual figures for work-related fatal injuries for 2017/18, as well as the number of people known to have died from the asbestos-related cancer, mesothelioma, in 2016.

The HSE revealed that 144 workers were fatally injured between April 2017 and March 2018 (a rate of 0.45 per 100,000 workers). This provisional annual data represents an increase of nine fatalities from 2016/17, however there has been a long-term downward trend in the number of fatal injuries to workers since 1981. Although in recent years, the number has remained broadly level with the average annual number of workers killed at work over the five years 2013/14-2017/18p (the average number is 141).

Construction Industry Statistics

Accounting for the largest share of any industry, 38 construction workers sustained fatal injuries in 2017/18, an increase of 27% compared to the lowest number on record (30) for worker deaths in 2016/17.

The rate of fatal injury in construction is now at 1.64 per 100,000 workers employed. This is around four times as high as the average rate across industries but considerably less than the rate in either Agriculture (18 times as high) or Waste and recycling (16 times as high). It should be noted however that the number of fatal injuries in the construction sector has fluctuated in recent years. Some 47 people were killed in 2015/16 compared with the

previous year's total of 35.

The increased costs of Health and Safety Prosecutions

The value of fines collected from the construction sector for breaches of health and safety law has doubled in a year to almost £13 million.

Information from the HSE shows that the total value of fines collected from businesses operating in the construction sector increased to £13m in the first year of the new sentencing guideline (year end 31 January 2017), up from £7m in the previous 12 months – an 83% rise. New sentencing guidance introduced on the 1 February 2016 toughened penalties for health and safety and corporate manslaughter offences. Under the new approach, the scale of fines varies according to the turnover of the company but can exceed £20m for the very worst cases involving corporate manslaughter, and potentially more for the largest companies. Fines against the construction sector represented 21% of the overall total collected by the HSE this year. The highest fine imposed on the sector was £2.6m.

The HSE has enforcement oversight of 'higher risk sectors' including construction and manufacturing. While local authorities are responsible for the enforcement of 'lower risk sectors', such as retail, leisure, hospitality, care, catering, warehousing and office space. The percentage increase in fines in the construction sector is significant but not unexpected. The cases that have passed

through the courts have reinforced the dramatic effect the new sentencing regime is having on defendant organisations. The HSE has a 94% conviction rate when they prosecute so the consequences of receiving a summons are considerable."

The first year of the guideline has seen fines for construction organisations rise by more than 80%.

As an industry, construction has consistently been identified as a sector with a 'statistically significantly higher' workplace injury rate. Home to 6% of the national workforce, construction has been responsible for nearly one third of work related deaths; a disproportionate and concerning figure, albeit one that is improving based on the HSE's most recent statistics.

Client Duties CDM

The client has a key influence on the outcome of a construction project because the project is originated by the client, often the client sets the overall programme and the client pays for the work to be executed. Clients should set the ground rules for health and safety even though the extent of their involvement in the project will not depend upon their own knowledge and experience of construction processes.

Large clients may have their own comprehensive in-house design team, and even their own direct labour contracting team. There is nothing to prevent such clients using these resources to provide the roles of Lead Designer, designer or principal contractor providing they

are competent to do the work in accordance with the regulations. Smaller clients will need to buy-in the expertise they need and may need to seek professional advice on the competence of appointments they make.

On all projects the client must verify that adequate management arrangements are in place to ensure that the roles, functions and responsibilities of all members of the project team are clear and understood. The organisations and individuals working on the project should know their roles, responsibilities and authorities and their relationship with other members of the team.

This will include:

- checking that there is good co-operation and communication between designers and contractors;
- checking that there is adequate protection for the client's workers and/or members of the public;
- checking to make sure that adequate welfare facilities have been provided by the contractor; and
- checking that the arrangements which the contractor agreed to make to control key risks on site have been implemented.

On notifiable projects the Client is required to notify the relevant authority involve design audits and site inspections and audits. On non-notifiable projects the client will either have to perform these checks themselves or obtain this assistance from others, which may be a person or organisation who has the competence to act in this role, for example the principal designer or principal contractor or a third party with relevant knowledge and expertise.

How designers can influence the safety of the construction worker

Designers have a key role to play in CDM 2015 as they are in a unique position to reduce the risks that arise during construction work. The earlier that decisions are made by them, the greater will be the affect on construction health and safety and the influence of later design choices. It is vital to consider health and safety in the design process from the outset. Designers often consider health and safety in their designs by utilising the 'Hierarchy of Risk Control' during the design process. This process allows them to eliminate or mitigate risks to health and safety within their designs. Where it is not possible to eliminate particular risks, information about them must be passed to the Principal Contractor for inclusion in the Construction Phase Plan. In arriving at design decisions concerning risk, the designer can take account of the costs of eliminating, or including, a design feature. These costs can be counted not just in financial terms but, for instance, in aesthetics, buildability, fitness for purpose, and

environmental impact. Designers' responsibilities extend beyond the design phase. They need to consider the safety of those people who maintain, clean, repair and eventually demolish their structures.

Cracks starting to show if you don't fulfil your legal obligations

The major prosecution under CDM 2015 was a Principal Designer and Principal Contractor having both been sentenced after serious breaches of their health and safety duties under CDM 2015 in 2016.

Exeter Magistrates heard that concern was raised about the lack of health and safety controls on a large timber frame extension project at a residential home in Exmouth.

HSE inspectors visited the site and found numerous health and safety breaches including:

- Risk – uncontrolled high-risk activities putting workers at risk of death, serious injuries or ill health including falls from height, fire, slips and trips and poorly controlled wood dust.
- Management – a "total disregard" for health and safety and site management; and
- Fire – risk of fire spread associated with the construction of a timber frame extension adjoining an existing building where physically and/or mentally impaired residents of the home were put at risk of injury or death due to the possibility of fire spreading into the home.

Further HSE investigation revealed that the work was not properly planned, nor appropriately supervised or carried out in a safe manner.

Third party risk not considered

The CDM Principal Contractor was required to control how the work was carried out and to ensure that the work would be completed safely. The CDM Principal Designer failed during the pre-construction phase to consider the risk of fire spread to the vulnerable nearby residents.

- Coast & Country Construction Limited – of Concord Road, Exmouth did not attend court but were found guilty in their absence to breaching Section 2 (1) and 3 (1) of the Health and Safety at Work etc Act 1974, and have been fined £150,000 and ordered to pay costs of £6,039.
- Paul Humphries Architects Ltd – of Salterton Road, Exmouth pleaded guilty to breaching Regulation 11 (1) and 11 (3) of the Construction (Design and Management)

Regulations 2015, and have been fined £20,000 and ordered to pay costs of £6,039.

How Safer Sphere can help

Ensure your Safety Advisor or representative are fully aware of what is going on throughout the pre-construction and building phases and ensure you understand your duties under the CDM regulations 2015.

CDM 2015 Regulation 11(1) requires that the PD must plan, manage and monitor the pre-construction phase and coordinate matters relating to health and safety during the pre-construction phase to ensure that, so far as is reasonably practicable, the project is carried out without risks to health or safety. In fulfilling this duty the PD must identify and eliminate or control foreseeable risks to the health or safety of any person carrying out or liable to be affected by construction work.

If you are unsure how to discharge your duties as a PD or PC then ensure you appoint a suitable Advisor that can help you deliver the role effectively.

Safer Sphere are a team of established health & safety advisors designed and tailored to the construction industry. Our focus is to assist the industry and CDM duty holders in effectively discharging the duties applied to them by the CDM Regulations and related health & safety legislation. Knowledge, experience and capability are qualities that underline Safe Sphere's proficiency within this specialist area of construction management. This enables us to provide a superior service at competitive and cost-effective fees, giving our clients the ability to model themselves as market leaders with respect to their H&S commitment, compliance and performance.

Safer Sphere creates lasting relationships with our clients and their partners through practising with a trusted integrity, respectful, collaborative and professional approach. As a business, we strive to be exceptional in everything we do. We seek and are committed, to achieving outstanding performance and the best available solutions for our clients. All Safer Sphere consultants and advisors are Chartered or Incorporated professionals from within the field of construction management or design, who have focused to specialise in Construction Health & Safety as extensively competent CDM and Construction Safety Practitioners.

Please contact us if you are interested in the site inspections and audit service or would like to know more about this service.



SAFER SPHERE NAMED CDM CONSULTANT OF THE YEAR AT NATIONAL INDUSTRY AWARDS



Construction (Design and Management) specialist, Safer Sphere has won 'CDM Consultant of the Year' at the National Association of Project Safety (APS) Awards, which recognises excellence in construction health and safety risk management.

The North West based company beat off strong competition from some of the biggest names in the industry to take home the crown at the 2018 APS Awards held in Manchester.

The CDM Consultancy won the prestigious award based on the services provided to the multi-site Design and Build PRS scheme by Dandara, which sees the development of residential units across Salford, Leeds, and Birmingham. The project delivery is made up of big names such as Sir Robert McAlpine, Galliford Try, and Interserve; Safer Sphere was appointed as Client CDM Advisor and Principal Designer Advisors on the project. Mike Forsyth, Managing Director, Safer Sphere said "We are delighted to have won CDM Consultant of Year at the national APS awards as this is one of the highest accolades we can receive for our business. To make it into the final of these leading industry awards is an achievement but to win just highlights the amazing success for Safer Sphere and its accomplishments. This award is solely down to the efforts and expertise of the team as well as the great support of our clients. The Dandara PRS scheme has been a fantastic scheme to work on and we will continue to work on the scheme having been appointed on the Sweet Street and Chapel Wharf fit-outs, which means we will be seeing the project through from concept to completion. Safer Sphere has one the best delivery teams in the industry and this award is testament to this and I couldn't be prouder."



CONSTRUCTION FIRM AND DIRECTOR FINED FOR SAFETY BREACHES

A company and its director have been fined for failure to comply with a prohibition and improvement notice. Southwark Crown Court heard how, on 31 March 2016, Awad (UK) Ltd, under the control of its director Andrzej Wilk, was issued with a prohibition notice on site where it was found that persons were at serious risk of fall and injury from the unprotected edges at the site. The court also heard that the company was issued with an improvement notice on 4 April 2016 for failure to provide adequate and suitable welfare facilities at the site. An investigation by the Health and Safety Executive (HSE) found Awad (UK) Ltd and Andrzej Wilk had not taken steps to comply with the prohibition notice preventing any work near the open edges where there was a risk of fall and injury to persons. The investigation also found that Awad (UK) Ltd and Andrzej Wilk had not complied with the improvement notice requiring the provision of adequate and sufficient welfare facilities.

Awad (UK) Ltd of Fourth Way, Wembley, Middlesex pleaded guilty to breaching Regulation 6(3) of the Work at Height Regulations 2005 and Section 21 and 22 of the Health & Safety at Work etc Act 1974. The company has been fined £37,500 and ordered to pay costs of £10,000. Andrzej Wilk of Beresford Avenue, Surbiton pleaded guilty to breaching Section 37 of the Health and Safety at Work etc. Act 1974 and was fined £7,500 and ordered to pay costs of £10,000.

Speaking after the case, HSE inspector Saif Deen said: "The risks associated with working at height and the requirement to provide adequate welfare facilities are well-known throughout the construction industry. "In this case, the company and its director failed to comply with HSE's enforcement action and continued to put persons at risk of serious injury."

SOURCE: [HTTP://PRESS.HSE.GOV.UK/](http://press.hse.gov.uk/)

PETERBOROUGH COMPANY FINED FOR FAILING TO UNDERTAKE ASBESTOS ASSESSMENT

A property management company has today been sentenced after failing to carry out an asbestos survey prior to undertaking extensive refurbishment works. Huntingdon Magistrates' Court heard how, between April and May 2017, Thistlemoor Healthcare and Management Ltd undertook construction work at two properties, one of which was part of a medical centre in Peterborough. In this time, the company failed to carry out an asbestos survey for either property, both of which were likely to contain asbestos.

An investigation by the Health and Safety Executive (HSE) found the company undertook and carried out construction which was likely to disturb asbestos containing materials during the strip out and part demolition of the two properties. Despite this, the company failed in its duty to carry out an asbestos survey for either property.

Thistlemoor Healthcare and Management Ltd of Thistlemoor Road, Peterborough pleaded guilty to breaching Regulation 5 of Control of Asbestos Regulations

2012 and has been fined £15,000 and ordered to pay costs of £1,805.60.

Speaking after the hearing, HSE inspector Samantha Wells said: "The risk of exposure to asbestos could so easily have been avoided if the company had carried out a suitable and sufficient asbestos assessment to identify the presence of asbestos within properties prior to commencing refurbishment work.

"Companies should be aware HSE will not hesitate to take appropriate enforcement action against those that fall below the required standards."



SOURCE: [HTTP://PRESS.HSE.GOV.UK/](http://press.hse.gov.uk/)



**Safer
Sphere**

IS YOUR PROJECT COMPLIANT?

CDM CLIENT SUPPORT SOLUTIONS

SAFER SPHERE HAS AN ARRAY OF EXPERIENCE IN DELIVERING CDM SUPPORT IN ACCORDANCE WITH THE CDM REGULATIONS 2015.

We pride ourselves on delivering above and beyond the call of the CDM Regulations, our integration with the client project delivery teams and support provided to enable best practice solutions. Our delivery model ensures a superior service, competent advice and ultimately a project that meets with the very best practices of Construction Health & Safety.

CDM 2015 PROJECT CDM CONSULTANT SERVICES INCLUDE:-

Acting as adviser to the Client in discharging their duties including:-

- Notify the HSE of the project via an online applications.
- Advise on and or collate the project Pre Construction H&S Information Pack on behalf of the client for issue to the project team.
- Assist with preparation of and advise the client as to the adequacy of the Construction Phase H&S Plan and welfare facilities developed by the

Principal Contractor.

- Monitoring of Principal Designer and Principal Contractor compliance.
- Advise on and or collate the project H&S File.

ADDITIONAL SERVICES WHICH A CLIENT MAY ALSO WISH TO CONSIDER:-

- Stage 1 & Stage 2 Competence Assessments of duty holders against the requirements of PAS 91.
- PQQ / ITT H&S question setting for framework and or project tender enquiries.
- Independent Site Inspection and or Safety Audits of operations on site to ensure compliance.
- Liaison support with the Health & Safety Executive on behalf of the client.
- Client CDM training to assist client representative in understanding their duties under the CDM Regulations.
- Preparation of model contract / appointment clauses to hold designers and contractors to their duties and compliance.

Please contact Safer Sphere for any health & safety consultancy service fee quotations on **01744 768023** or email: **info@safersphere.co.uk**

CASE STUDY



Testimonial

"Safer Sphere have provided clear and pragmatic guidance to Dandara and the project team. They have navigated us through CDM 2007 and the new CDM 2015 Regulations to ensure the PRS scheme achieves best practice compliance. The benefits of this will be evident not only during construction but in the life cycle management of the completed structures".

Sean O'Connor
Dandara Project Director

CLIENT

Dandara

SERVICES PROVIDED

Client CDM Advisor &
Principal Designer Advisors

SERVICE PERIOD

2013 - Completion 2019

PROJECTS

Project Urban - Dandara PRS Scheme

SERVICES

CONSTRUCTION HEALTH & SAFETY, ADVISORS AND PRINCIPAL DESIGNER ADVISORS

Safer Sphere was originally appointed as CDM Coordinators to a 3500 unit PRS at 5 locations throughout the UK

These locations include:

- Chapel Wharf Salford
- Sweet Street Leeds
- Alpha Birmingham
- GH20 Glasgow
- City Wharf Glasgow
- Cheshunt London
- Hemel Hempstead

Under CDM 2015 the role has evolved into Client CDM Advisors and Principal Designer Advisors. The scope of service includes:-

- Principal Designer Advisor services in line with CDM 2015
- Assisting with H&S in designs, buildability and programme to reduce risk profiles
- Assisting the Client in discharging their duties under CDM
- Pre-Contract reviews with sub-contractors and packages
- Reviews of high risk activities and applicable safe systems of work for enabling packages
- Advising on compliance with organisational operating procedures and minimum standards
- Providing CDM 2015 Training to the Dandara Group
- Member of the Dandara H&S Forum to establish continual improvement and best practice
- Overseeing PD and PC compliance in the construction stage.

Service Challenges

Whilst the client and design team have led the design with best practice CDM principles, some of the key challenges included:-

- UXO risk confirmed at most sites requiring further mitigations, along with extensive site investigations for all sites
- Transition between CDM 2007 & CDM 2015 mid design
- Working over and adjacent to waterways, railways and highway trunk roads
- Development of safe cleaning, maintenance and plant replacement strategies for the high rise structures.



YOUR LEADING FULL SERVICE CDM & CONSTRUCTION HEALTH & SAFETY CONSULTANTS

CONTRACTOR CDM SAFETY SUPPORT

CDM CLIENT SUPPORT

E-LEARNING

PRINCIPAL DESIGNER CONSULTANCY

MONTHLY SAFETY BULLETIN

Safer Sphere are the provider of choice for competent, professional and holistic Construction Health & Safety Solutions with a difference. We are specialist CDM Consultants in all areas of health and safety in construction including Construction Design & Management (CDM) and Project Health and Safety (H&S).

Our focus is to assist the industry in compliance through best practice, to provide simple and innovative solutions to a clients needs. As one of the leading CDM consultants and Construction Health & Safety consultants we are driven by our commitment to clients, our belief that we can always improve on what has gone before and that we can truly deliver the ability for us all to operate within a Safer Sphere.

"Our focus is to assist the industry in compliance through best practice, to provide simple and innovative solutions to a client's needs."

MIKE FORSYTH
MANAGING DIRECTOR

EXPERIENCE
RANGING FROM
MINOR PROJECTS
OF £20K THROUGH
TO MAJOR
DEVELOPMENTS
TO THE VALUE OF
£500M.

